

FORMALIA



FORMALIA - Available versions

| VERSIONS | | | DELIVERY TIMES* |
|---|-----------------------------------|-----------------------------|-----------------|
| DOOR | COLOUR | STRUCTURE | |
| PET | PET colours | DECORATIVE MELAMINE | BNOR |
| | | DOOR FINISH | |
| DECORATIVE MELAMINE | DECORATIVE MELAMINE colours | DECORATIVE MELAMINE | BNOR |
| | | DOOR FINISH | |
| MATT LACQUERED | MATT LACQUERED colours | DECORATIVE MELAMINE | B021 |
| | | DOOR FINISH | |
| GLOSSY LACQUERED | GLOSSY LACQUERED colours | DECORATIVE MELAMINE | B021 |
| | | DOOR FINISH | |
| GLASS WITH ALUMINIUM FRAME BLACK / TITANIUM | DARK SMOKED CLEAR STOPSOL colours | DECORATIVE MELAMINE | BNOR |
| | | PET colours | |
| | | DECORATIVE MELAMINE colours | |
| | | MATT LACQUERED colours | B021 |
| | | GLOSSY LACQUERED colours | |

* DELIVERY TIMES

BNOR - 20 working days from receipt of order.
B021 - 30/36 working days from receipt of order.

CAUTION:

These times are subject to transport scheduling needs. Please also consider approximately 3 working days needed to manage and clarify orders with our agencies.

"CUSTOM-SIZED" ELEMENTS

FOR NON-STANDARD SIZES APPLY A 40% SURCHARGE TO THE LARGER SIZE STANDARD ELEMENT

In the event of contract orders (i.e. relating to contracts entered into with architects, construction firms, etc., for real estate furnishings and/or other similar circumstances) with significant repetition of non-standard processing Scavolini is willing to grant more favourable conditions depending on possible economies of scale that can be achieved.

PET DOOR



Matt with ABS edging, decorative melamine interior
Door thickness 2.2 cm

PET colours



Silky finish Night
SCAV 978



Silky finish Rain
SCAV 979



Silky finish Talcum powder
SCAV 977

DECORATIVE MELAMINE DOOR



Matt with ABS edging
Door thickness 2.2 cm

DECORATIVE MELAMINE colours



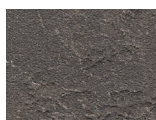
Arabica Walnut
SCAV 975



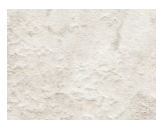
Bancha Walnut
SCAV 976



Garden Walnut
SCAV 942



Abyss Stone
SCAV 973



Solar Stone
SCAV 974

LACQUERED DOOR



MATT LACQUERED
Door thickness 2.2 cm



GLOSSY LACQUERED
Door thickness 2.2 cm

LACQUERED colours available

| KEY | |
|-----|---|
| ● | Matt Lacquered Door MATT LACQUERED colours |
| ○ | Glossy Lacquered Door GLOSSY LACQUERED colours |

CAUTION:

The 'lacquer touch-up pack' is **NOT** supplied, but it is available for purchase by ordering code 75067897 (see 'Model Accessories')

| | | | | | |
|---|-----------------------------|--|---|------------------------------|------------------------------|
| ●○ SCAV 557 Blue Lagoon | ●○ RAL 1013 Beige | ●○ SCAV 028 Prestige White | ●○ SCAV 569 Agave Blue | ●○ SCAV 568 Moon Blue | ●○ SCAV 453 Powder Pink |
| ●○ SCAV 805 Mustard Yellow | ●○ SCAV 325 Heron Grey | ● SCAV 301 ○ SCAV 302 Light Grey | ●○ SCAV 374 Iron Grey | ●○ SCAV 899 Matera Grey | ●○ SCAV 375 Titanium Grey |
| ● SCAV 357 ○ SCAV 358 Tundra Grey | ●○ SCAV 324 Volcano Grey | ●○ SCAV 424 Slate Black | ● SCAV 041 ○ SCAV 042 Porcelain Cream | ●○ SCAV 514 Coral Red | ●○ SCAV 515 Morocco Red |
| ●○ SCAV 505 Ruby Red | ●○ SCAV 406 Rust | ●○ SCAV 855 Dove Grey | ●○ SCAV 279 Aloe Green | ●○ SCAV 277 Mineral Green | ●○ SCAV 570 Teal Green |
| ●○ SCAV 856 Mink | | | | | |

ALUMINIUM FRAMED GLASS DOOR



Smoked Glass with Black finish Aluminium frame
Door thickness 2.2 cm



Clear Stopsol Glass with Black finish Aluminium frame
Door thickness 2.2 cm



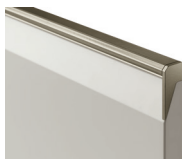
Smoked glass with Titanium finish Aluminium frame
Door thickness 2.2 cm



Clear Stopsol Glass with Titanium finish Aluminium frame
Door thickness 2.2 cm

Opening systems

Built-in handle profile for base units



code 32301
Titanium finish



code 32302
Black finish

Handles for washing machine/laundry units and storage cupboard



Code 30951/2/3/4
Recessed handle, lacquered white, black, in chrome-finish or satin-finish steel



Code 30955/6/7/8
Recessed handle, lacquered white, black, in chrome-finish or satin-finish steel



Warning

For the remainder of the furniture, unless otherwise specified, the door opening is push-pull.

FORMALIA - Available versions

* For Night structure the back panel is in Grey SCAV 859 colour, for Rain structure the back panel is in Seagull Grey SCAV380 colour, for Talcum Powder structure the back panel is in White SCAV 024 colour. ** For Arabica Walnut and Abyss Stone structure the back panel is in Grey SCAV 859 colour, for Bancha Walnut structure the back panel is in Flint Grey SCAV 322 colour, for Solar Stone structure the back panel is in White SCAV 024 colour.

Side panels, top panel and bottom 1.8 cm thick; back panel 1.2 cm thick. 0.6 cm thick tempered glass shelves with ground edging, polished.



DOOR FINISH STRUCTURE - PET*

Pet on the outside and in decorative melamine to match the colour of the door on the inside. Painted base unit structure band (White for Rain and Talcum Powder colour; Dark Brown for Night colour).



DOOR FIN.STRUCTURE - DECORATIVE MELAMINE**

Smooth matt decorative melamine interior and structured on the external surface same as front door. ABS edging. Painted base unit structure band (White for Solar Stone colours; Light Brown for Bancha Walnut colours; Dark Brown for Arabica Walnut, Garden Walnut and Abyss Stone colours).



DOOR FINISH STRUCTURE - MATT LACQUERED

Matt lacquered on the interior and exterior. Matt lacquered edging.



DOOR FINISH STRUCTURE - GLOSSY LACQUERED

Matt lacquered on the interior and glossy lacquered on the exterior. Glossy lacquered edging.



DECORATIVE MELAMINE STRUCTURE - WHITE SCAV 024

Matt White on the interior and exterior. ABS edging. White painted base unit structure band

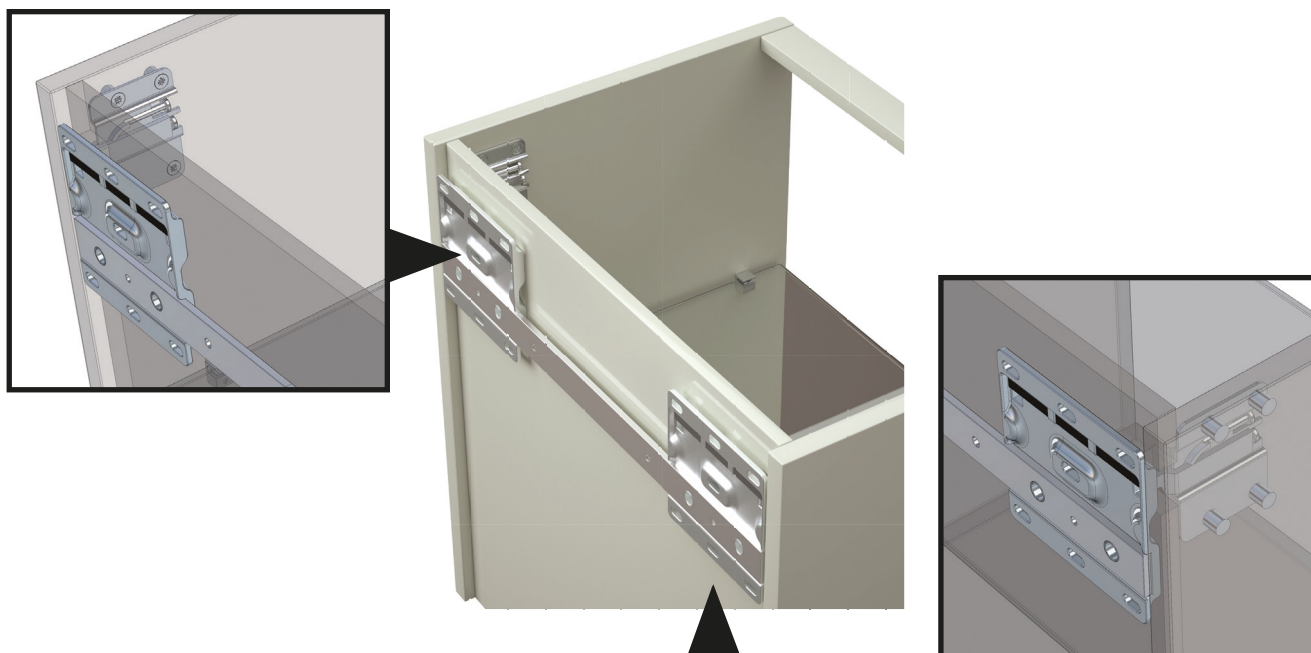


DECORATIVE MELAMINE STRUCTURE - GREY SCAV 859

Matt Grey on the interior and exterior. ABS edging. Dark Brown painted base unit structure band.

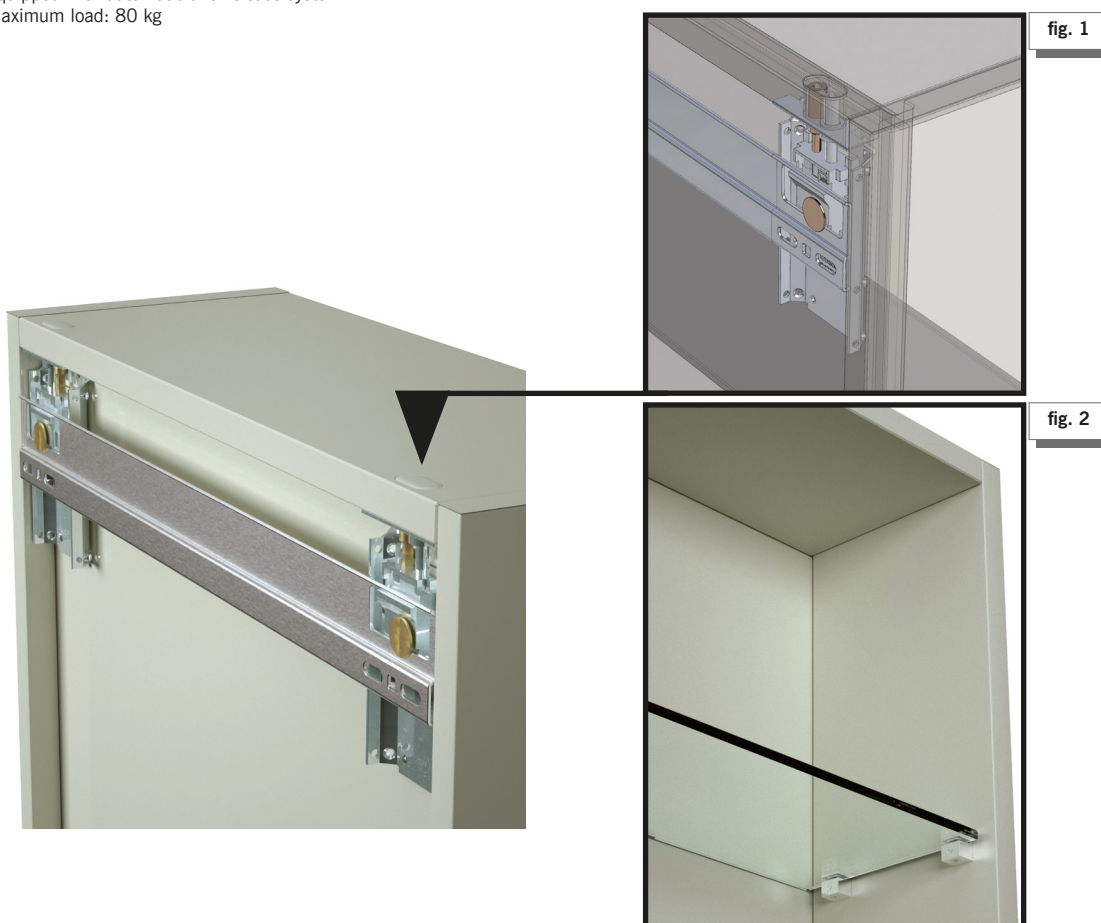
Base unit support system

Base unit support system with galvanised metal structure and vertical and horizontal adjustment, automatic anti-release system.
Maximum load on base units H.25 cm: 80 kg, on base units H.50/75 cm: 100 kg



Wall-mounted wall unit/cabinet support system (without visible fastener)

Wall unit support system with galvanised metal structure and vertical and horizontal adjustment, accessible on the external upper part of the wall unit (fig. 1), leaving **THE INSIDE OF THE WALL UNIT COMPLETELY FREE** (fig. 2).
Equipped with automatic anti-release system.
Maximum load: 80 kg



Chrome-finish glass shelf support

In polished chrome-finish metal fitted with soft engineering plastic material both at the top and bottom.



Pull-out baskets and drawers

27 and 40 cm deep, full extraction, dynamic load (40 kg) with Blumotion closing system.
LEGRABOX metal sides, painted White or Anthracite; base in White or Anthracite decorative melamine, 16 mm thick;
back in metal, painted White or Anthracite.

Anthracite



White



Aluminium plinths



H. 7 cm
Satin-finish Silver finish



H. 7 cm
painted Matt White



H. 7 cm
painted Matt Black



H. 3/7 cm
Polished steel finish